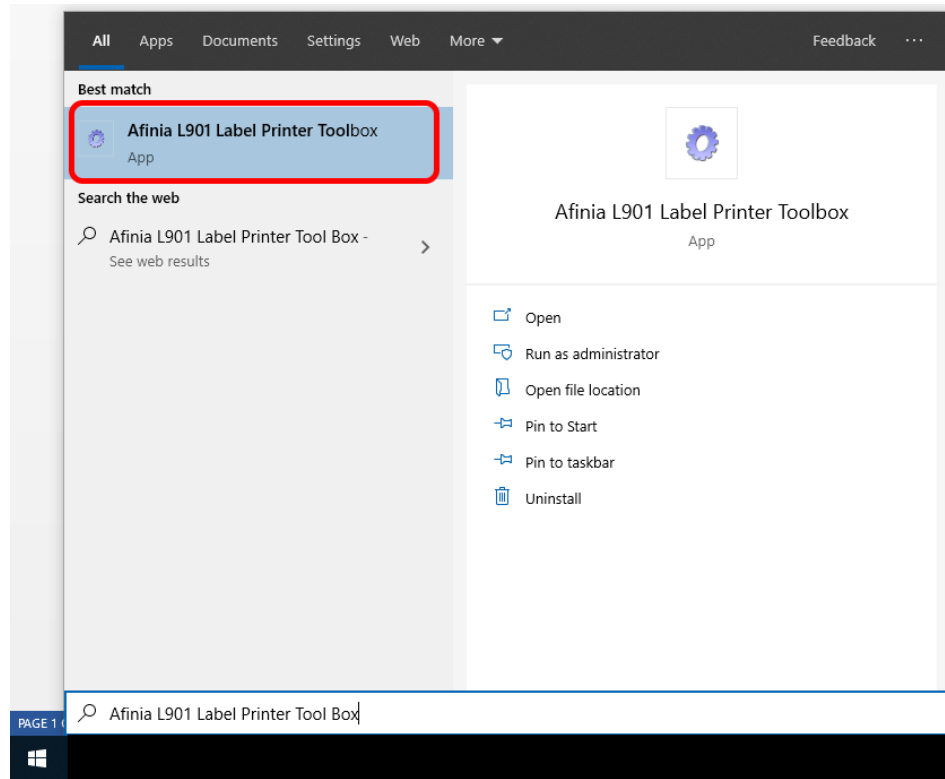
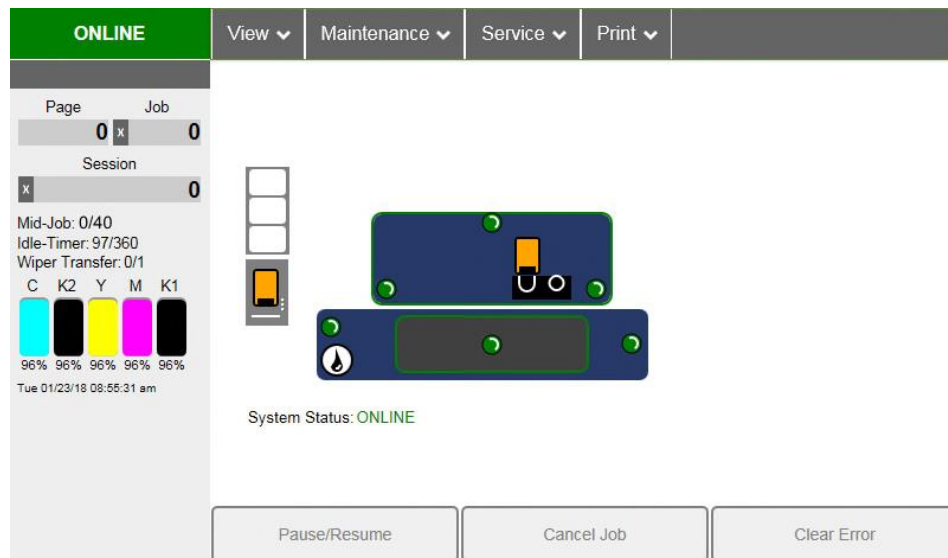


1. Go to the Start Menu on your Computer and go to Afinia Label/Afinia L901 Printer Toolbox (You can also search for it in your Start Menu)



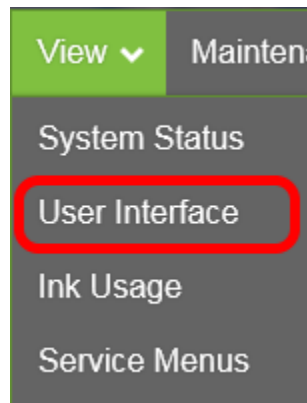
I.

2. Once you have opened the Toolbox you will see it open your Default Web Browser showing a menu setup similar to below:



I.

- Go to the Top Row of options and select the View option to reveal a drop down list of options.
Select User Interface

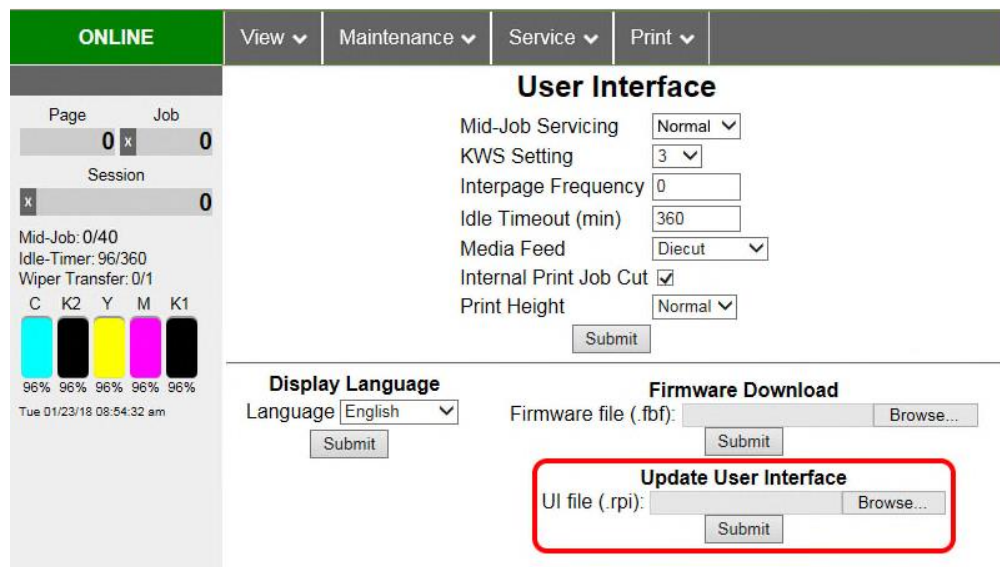


I.

- Once you Select User Interface, you will see a window similar to the window pictured below. On the bottom of the page you will see Firmware Download and Update User Interface Options.

First thing to update will be the User Interface. Select the Browse Option and Browse to the "UI Firmware 1.05.rpi" file you downloaded from the web.

After that Select Submit and you will see on the front panel indicate the UI is Updating. Once it's done it will restart the display and return to what you normally see.



I.

5. After the UI Firmware has been updated, refresh your browser and return to this same menu following steps 2-3.

Now you will want to update the Printer Firmware using the Firmware Download option. Same as before, select Browse and browse to the “XXXXXX Printer Firmware 1.4.0.fbf” file (XXXXXX indicates hardware model number).

After that select Submit and you will see on the front panel the printer indicating its updating the Printer Firmware with a progress bar. Once it’s completed it will restart the printer.

The screenshot displays the printer's web interface. At the top, there is a navigation bar with tabs: **ONLINE** (highlighted in green), View, Maintenance, Service, and Print. Below this, the **User Interface** section contains various settings: Mid-Job Servicing (Normal), KWS Setting (3), Interpage Frequency (0), Idle Timeout (min) (360), Media Feed (Diecut), Internal Print Job Cut (checked), and Print Height (Normal). A **Submit** button is located below these settings. To the left of the settings, a sidebar shows status information: Page 0, Job 0, Session 0, Mid-Job: 0/40, Idle-Timer: 96/360, Wiper Transfer: 0/1, and color bar levels for C, K2, Y, M, and K1, all at 96%. The date and time are shown as Tue 01/23/18 08:54:32 am. Below the settings, the **Display Language** section shows 'English' selected. The **Firmware Download** section is highlighted with a red box and contains a text input for 'Firmware file (.fbf):', a **Browse...** button, and a **Submit** button. Below that, the **Update User Interface** section contains a text input for 'UI file (.rpi):', a **Browse...** button, and a **Submit** button.

I.

6. After this is complete you’ve finished updating your firmware.