

AFINIA LABEL[®]

L501 LABEL PRINTER

Quick Setup and Installation Guide

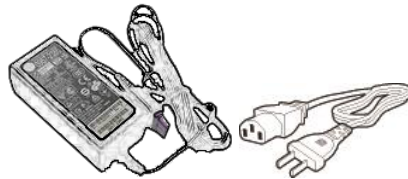
For more detailed information, please refer to the **User Guide** installed on your PC.

Unpack:

 Click to view the [Setup and Installation video](#)



- 4 aerosol absorbing pads

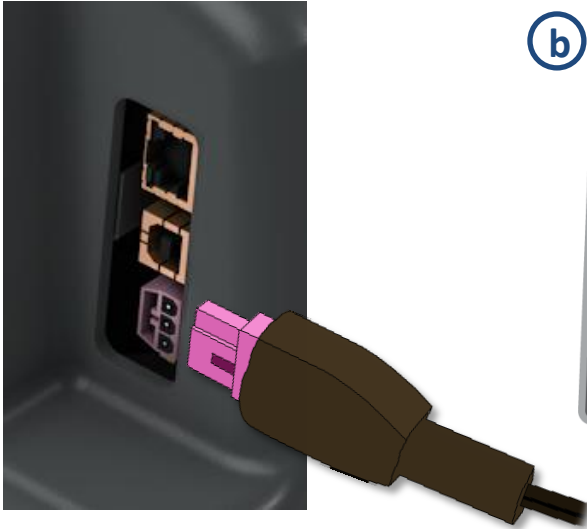


1 Remove 3 shipping tapes



2 Connect Power

a



b



3 Install Ink Cartridges

a

Open Ink Cartridge Access Door

b

Remove cartridges from packaging

c

Press each cartridge into the correct slot until it clicks

Left to right: **C – M – Y – K**

d

Close Ink Cartridge Access Door



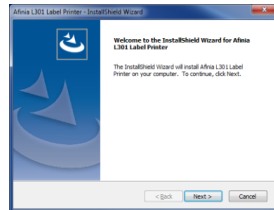
4 Install Printer (USB connection)

For network connection, please see User Manual

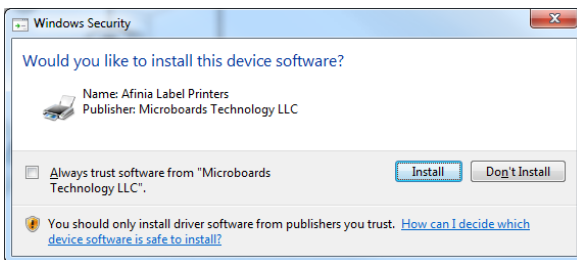
- a** Download Installer to your computer from

<http://afinialabel.com/I501info>

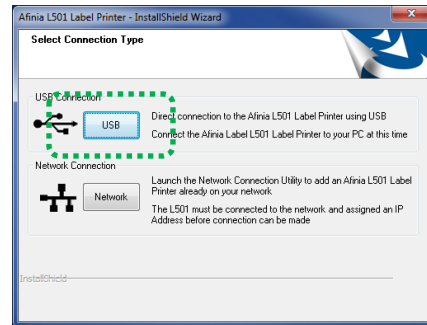
- b** Run Installer on your computer, follow all steps



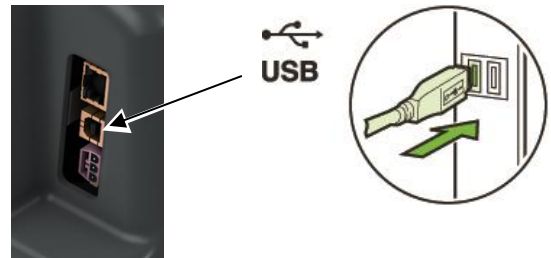
- c** Click **Install** (will see this 3 times)



- d** Click **USB** button



- e** Connect printer to PC



5 Load Media

- a** Loosen Mandrel Knob and remove plate



- b** Slide roll onto mandrel up to the fixed plate



- c** Replace removable plate and tighten mandrel knob



- d** Insert stock into input slot under label guide and against right side



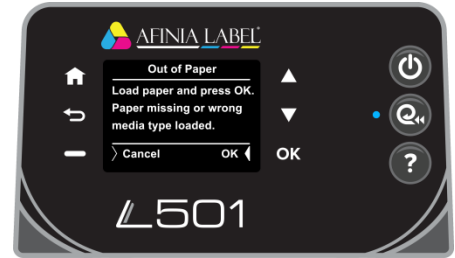
Push stock in until auto-feed begins, then adjust Paper Guide

Troubleshooting



If the L501 Label **Printer isn't printing** :

- Check for error messages on the control panel
- Verify selected media matches loaded media type
- Verify job sent to correct printer



If stock won't load:

- Wait until printer is initialized or idle; media LED will be blinking once a second when ready
- If media LED is blinking rapidly, press **Unload** button and try again
- Unwind more slack from label roll and try again



If the print position on the label is not correct:



- Watch the [L501 Adjusting Print Position video](#)

- or -



- See “Adjusting Alignment for Printing” on page 23 of the User’s Manual
- Verify you have the [correct label size selected](#)

If the label size you need isn't available:



- Watch the [L501 Custom Label Size video](#)

- or -

- See “Creating Custom Label Sizes” on page 25 of the User’s Manual



See all Technical Videos for the L501 Label Printer at

<http://afinialabel.com/L501info/videos>

For technical questions or support issues, contact Afinia Label Technical Support:

PH: 952-279-2643

support@afinia.com

www.afinialabel.com/support

Please have the Serial Number of your Afinia Label L501 Label Printer available when contacting Technical Support.