



AFINIA LABEL

DLF-1100 Quick Reference

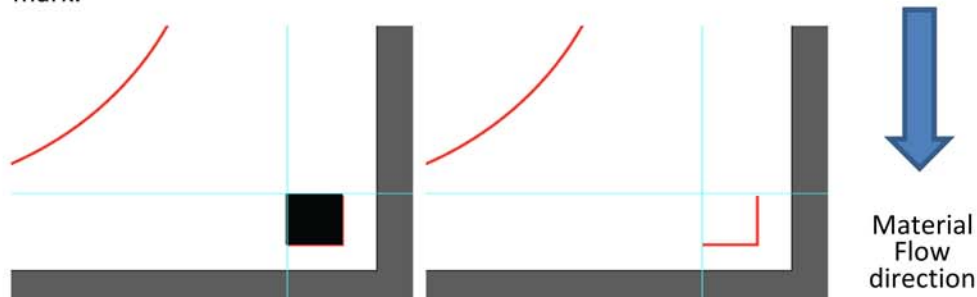
Adobe Illustrator will be the design software referenced in this guide. Some changes will need to be made if CorelDraw is used.

1.1 Installation

- 1.1.1 The installer is located on the USB stick that is in the accessory box. Run the file **DLF-1100_setup.exe**.

1.2 Modifications to pre-existing design files

- 1.2.1 Reg mark size should be $\frac{1}{4}$ " x $\frac{1}{4}$ " (6mm x 6mm) if not this size already.
- 1.2.2 Reg mark should be at least $\frac{1}{4}$ " away from artwork
- 1.2.3 In the Cut Path layer, include a cut mark around the right and leading edge of the Registration mark.

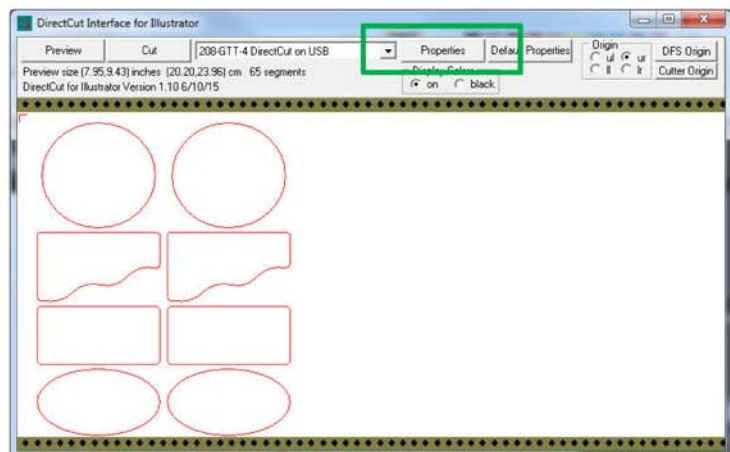


This will help position the cut correctly, reducing the amount of adjustments that may be needed.

- 1.2.4 Have the cut layer selected before opening DirectCut.
You do not need to hide artwork or other non-cut line layers.

1.3 DirectCut Interface Properties changes

- 1.3.1 Open the DirectCut plugin in your design software that was added during installation. You may need to make some changes to the Properties. Click the **Properties** button in DirectCut.





AFINIA LABEL

1.3.2 Increasing the **Print Quality** will make curved cuts smoother. This will increase the processing time and can increase the cut time somewhat, but may be needed for better cut results.

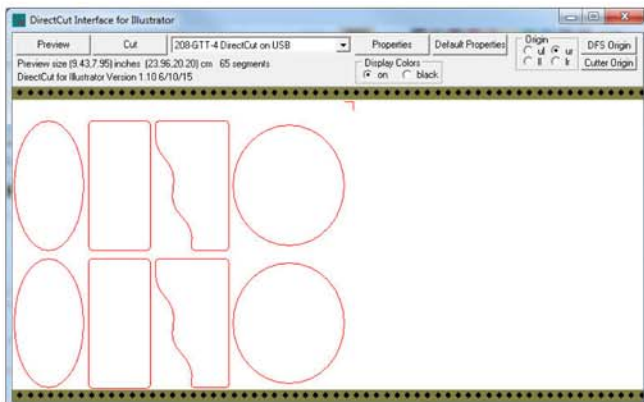
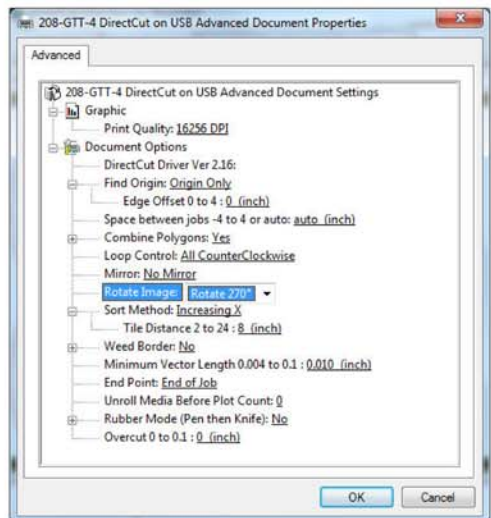
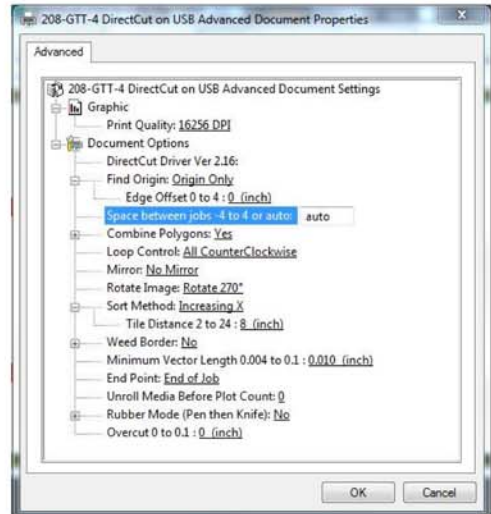
1.3.3 **Find Origin** setting should be changed to the correct type for your registration marks.

1.3.4 Set **Space between jobs** to **Auto**. This will cause the cutter to find the reg mark rather than moving a set distance before starting the cut.

NOTE: You must have DirectCut Version 2.16 AND Talon cutter firmware version b14 or higher to use this feature (included on installation USB stick).

1.3.5 Set **Loop Control** to **All Clockwise** or **All CounterClockwise**.

1.3.6 If the cut lines don't match the orientation of the label stock as webbed in the DLF-1100, change the **Rotate Image** setting. The cut lines should appear as shown below with the travel of the label stock being from left to right.





AFINIA LABEL

- 1.3.7 If the positioning is still not correct, change the **Origin** selection in the upper right corner of the DirectCut interface to **UR**.

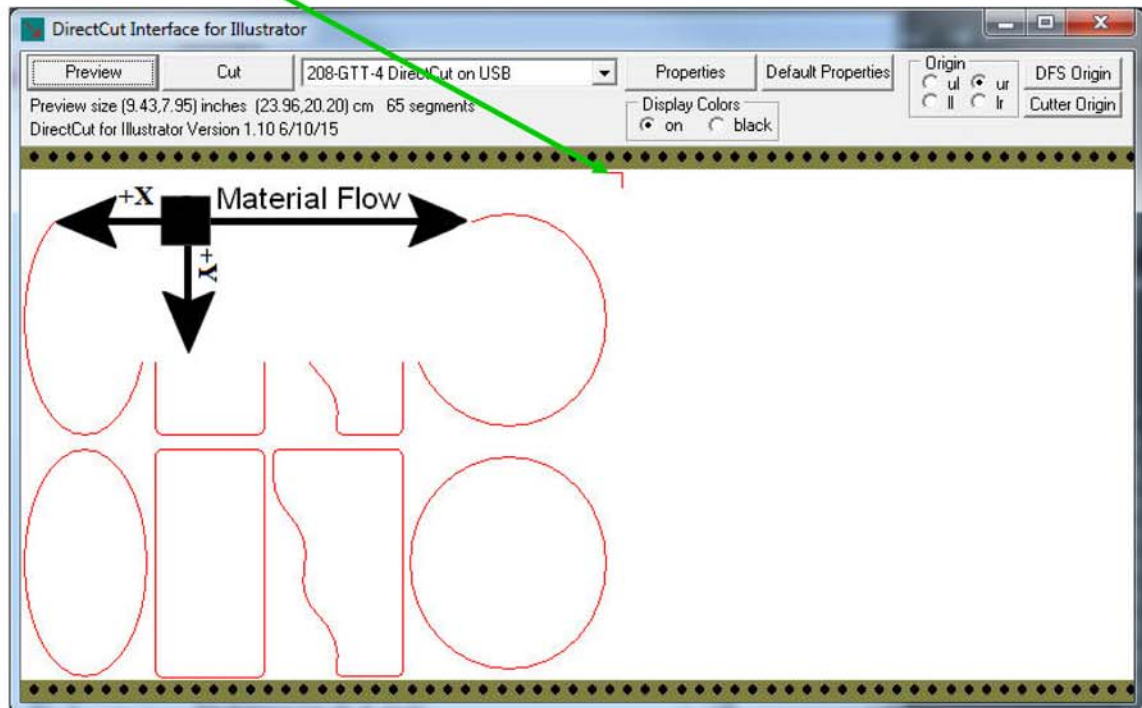


- 1.3.8 Set **Sort Method** to **Increasing X**. This will force the cut to follow the direction of Material Flow when using artwork with multiple labels per frame.

1.3.8.1 If the cutter head seems to be less efficient than expected, try the other Sort methods. You will need to resend the cut job.

- 1.3.9 Click **OK** to save these changes and close the Properties.

- 1.3.10 Click the **Preview** button to show the Material flow. Verify that the cut around the reg mark is at the top right.

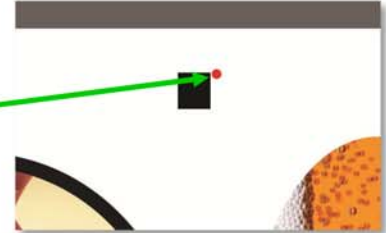




AFINIA LABEL

1.4 Sending the cut file to the DLF

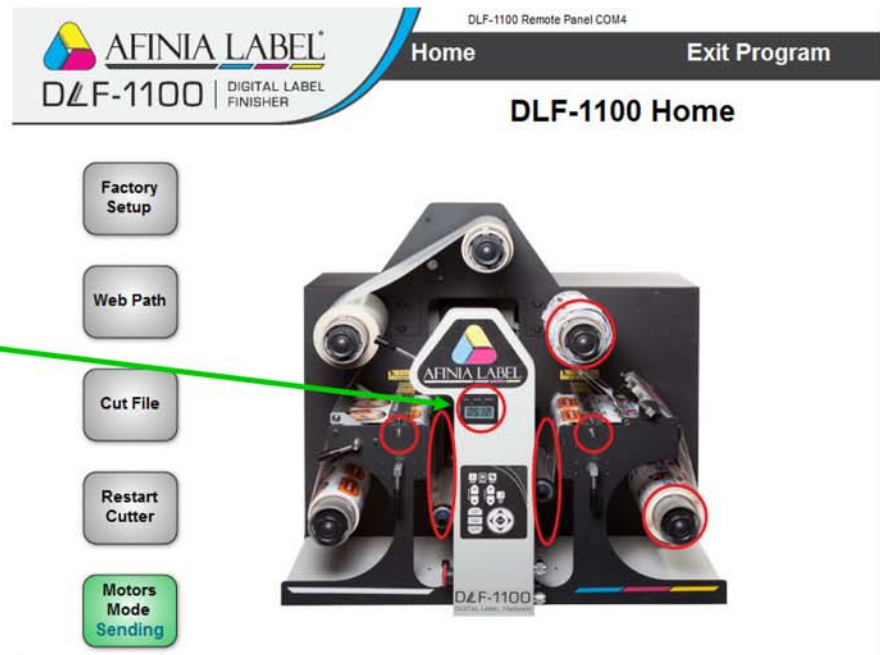
- 1.4.1 With the labels loaded into the DLF, use the arrow buttons on the front panel to position the detection laser to just to the right of the upper right corner of the reg mark.
- 1.4.2 Open the Remote Panel application. Once the software is running and the DLF is recognized, certain areas of the image of the DLF will be circled in red. Wait for this to happen before sending the cut.
- 1.4.3 Click the **Cut** button in the DirectCut interface. One frame will be cut.
- 1.4.4 Verify the cut position. If necessary, use the Remote Panel application to make cut position adjustments.



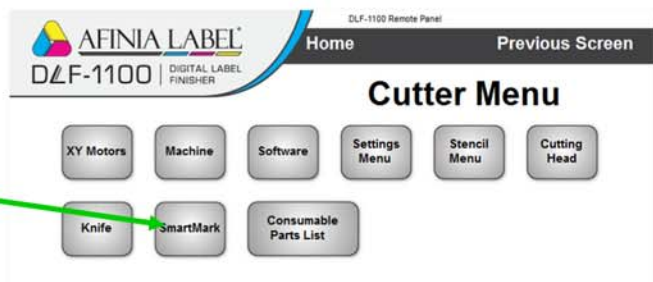
1.5 Using the Remote Panel application to adjust the cut position

The Remote Panel does not need to be open for adjustment values to be applied to the cutter.

- 1.5.1 Click the image of the DLF display screen circled in red in the Remote Panel interface.



- 1.5.2 Click the **SmartMark** button.





AFINIA LABEL

- 1.5.3 Click the **Registration Y Axis** or **Registration X Axis** button to adjust the cut position on each axis.

DLF-1100 Remote Panel

Home Previous Screen

Smart Mark Sensor Menu

Registration X Axis 0.835 in	Registration Y Axis -0.025 in	Scan Length 0.30 in	Scan Velocity 2	X Axis Size -0.001 in	
Y Axis Size -0.002 in	Space Jobs 0.000 in	Origin Menu	Skew Menu	Scale Menu	Cut Frame Rotate
Flag & SmartMark Sensor	Minimum Reflectance Change 70				

- 1.5.4 Use the **Clear** button to zero out existing settings or click any of the number pad buttons.

- 1.5.5 Use the number pad to enter the adjustments.

- 1.5.6 For X Axis adjustments, decreasing the value will move the cut to the left (relative to the printed label). Increasing the value will move the cut to the right (relative to the label).

- 1.5.7 For Y Axis adjustments, decreasing the value will move the cut closer to the front of the DLF. Increasing the value will move the cut towards the rear of the DLF.

DLF-1100 Remote Panel

Home Previous Screen

Edit Value

Registration X Axis

Amount the media moves after the sensor scans the mark to get knife to corner of mark. Increasing the number will move the cut to the right, decreasing will move the cut to the left.

Range -4 to 4

0.835 in

← Clear

↑	1	2	3
↓	4	5	6
	7	8	9
Save	-	0	.

- 1.5.8 Click **Save** to make the new value “live” and return to the Smart Mark Sensor menu.



AFINIA LABEL

1.5.9 Press the **Copy** button on the control panel of the DLF.

1.5.10 Press the **Up** joystick button once to change the number of copies. Repeated pressing or holding will increase the number of copies (Down will decrease the number).

1.5.10.1 Sending more than one copy to get the first cut frame past the waste removal may make it easier to check the cut position.

1.5.11 Press the **Select** joystick button to begin the cut.

1.5.12 Make additional adjustments as needed.

1.5.13 When the cut location is set correctly, press **Copy** on the control panel and the **Up** joystick button to set the number of copies to cut. When the copies are set, press the **Select** joystick button.

1.5.14 If additional adjustments need to be made after starting the job, press **Pause** and make additional adjustments using the Remote Panel application.

Press **Pause** again when done to resume cutting. Changes to the settings will be applied when the next cut frame begins.

1.5.15 All adjustments are cumulative with any related values entered into the DirectCut Properties, such as **Space between jobs** when that setting in the Properties is not set to **auto**.

1.5.16 Changing the **Edge Offset** in the **Properties**, as another example, would require a change to the **Registration Y Axis** setting in the **Remote Panel** to keep the cut from changing position.

